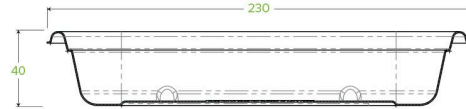
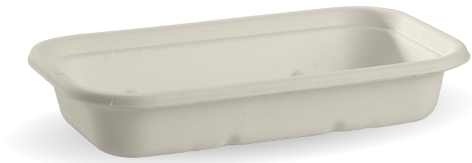


750ml White BioCane Takeaway Base B-LB-750-W



Carton quantity: 500	Sleeves per carton: 10	Units per sleeve: 50
Carton Size LxWxH (cm): 66.0 x 25.0 x 48.0	Carton gross weight (kg): 11.500000	Carton barcode: 19344062002069
Raw material: "Bagasse - White (80% sugarcane pulp, 20% wood pulp)"	Lining/coating: None	Window material: None
Printing Type: None	Inks: None	Brim fill capacity (ml): 767
Dimensions top LxW (mm): 230x130	Dimensions base LxW (mm): 185x85	Product Depth: 40.0
Product weight (g): 21.0	Thickness: 0.6mm	Use: Hot, Cold, Wet & Dry Products
Manufactured: China	Customise: Emboss	MOQ custom: 100000
Mould fees: Yes - see custom packaging	Environmental production certified: ISO 14001	Quality product certified: ISO 9001
Factory food safety certified: BRC, HACCP	Corporate social accreditation: SA 8000, BSCI	Home compostable: Certified to AS5810 Australian standards, Certified to NF T51-800 European standards, TBC
Industrially compostable: Certified to AS4376 Australian Standards, Certified to EN13432 European Standard	Recyclable: Yes - In The Paper Recycling if Not Contaminated With Food	